

產品設計導向分析軟體

汽車行業案例

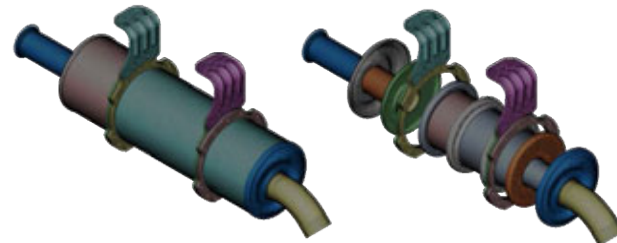


midas NFX

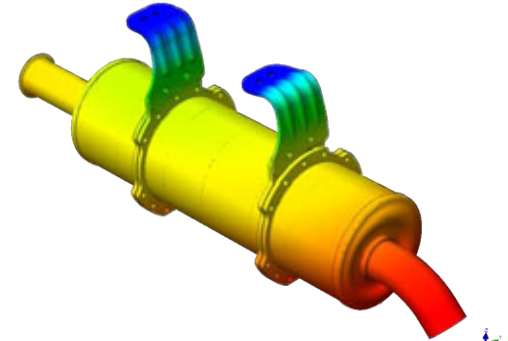
消音器固定支架強度和頻率分析

midas **NFX**

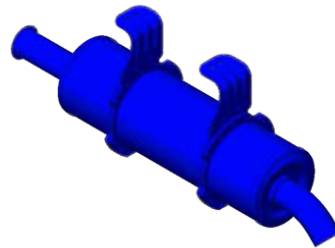
—分析模型



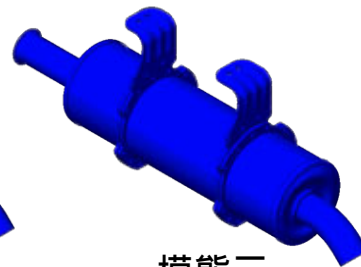
分析模型



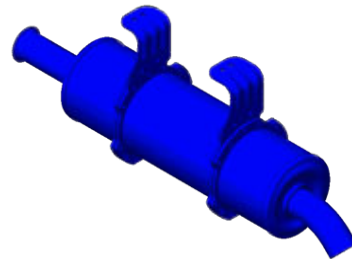
變形結果



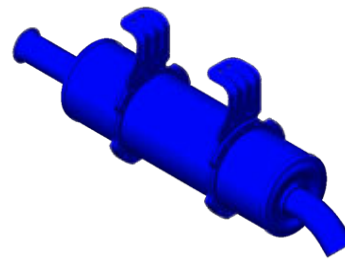
模態一



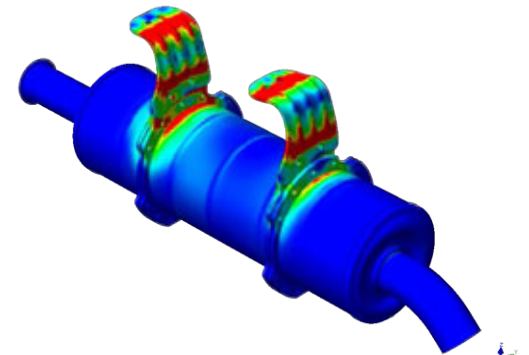
模態三



模態二



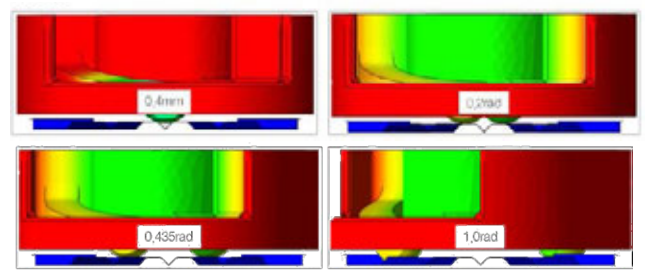
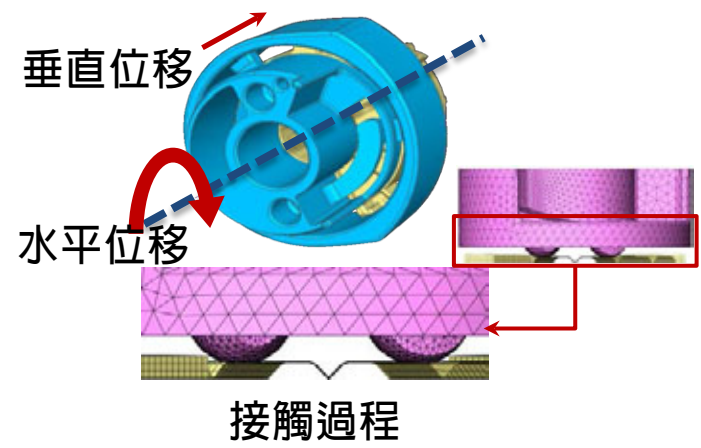
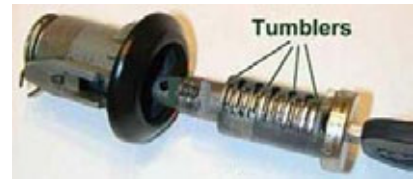
模態四



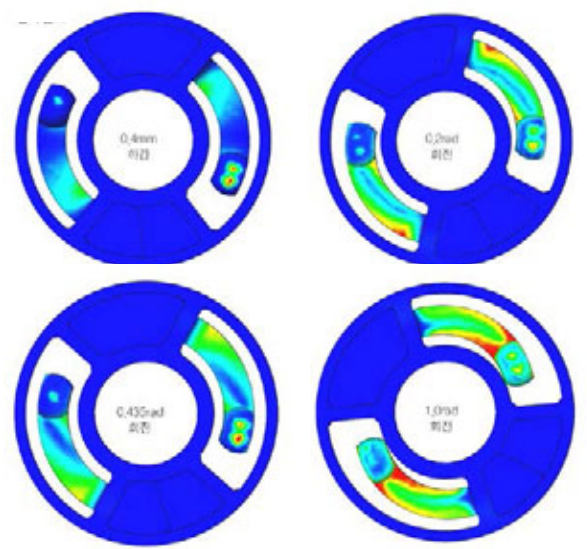
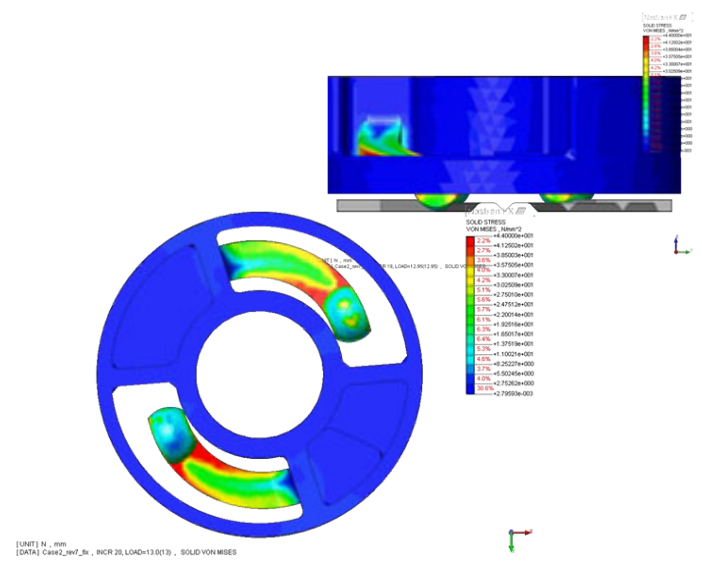
應力分佈

midas **NFX**

一 分析模型



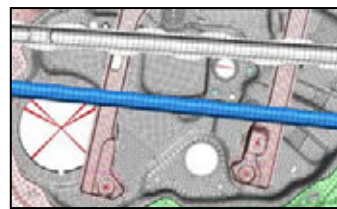
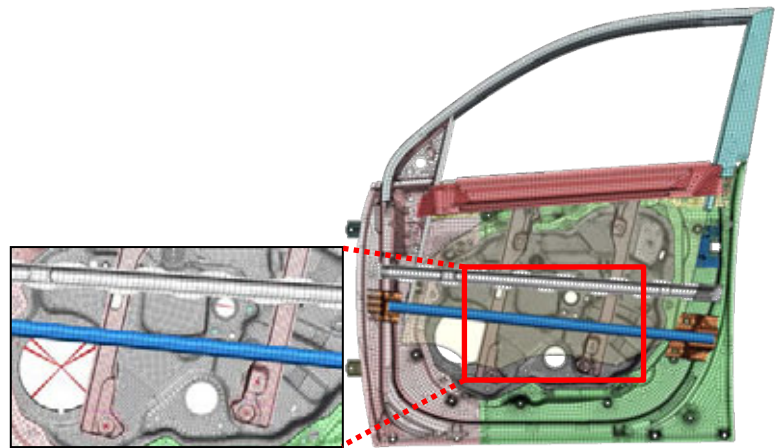
變形結果



應力分佈

midas **NFX**

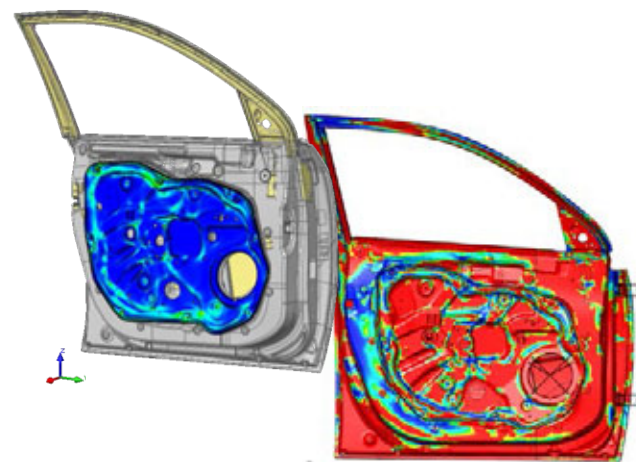
一 分析模型



變形



應力分佈



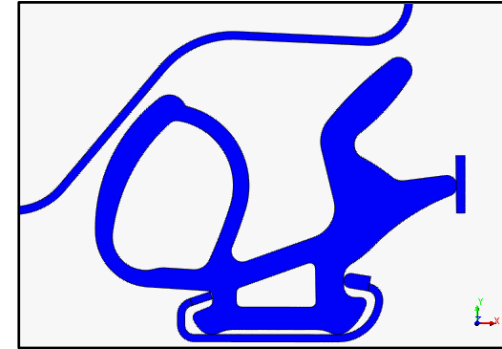
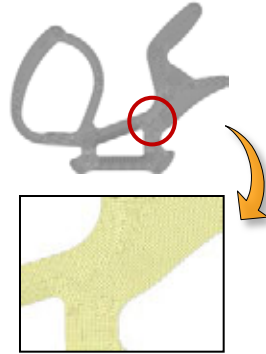
疲勞壽命

midas **NFX**

分析模型



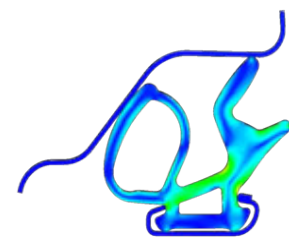
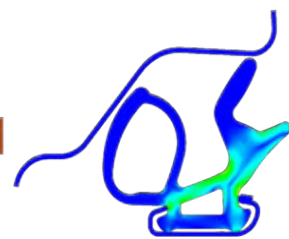
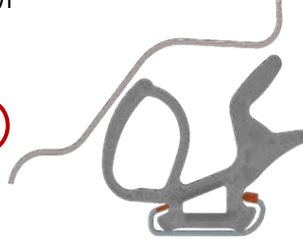
Weather Strip



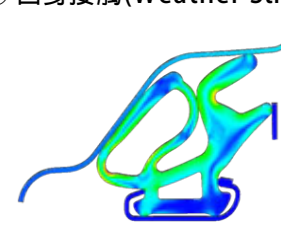
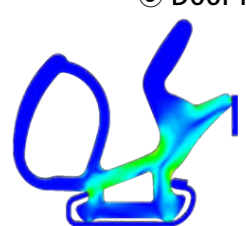
➢ 生產過程預應力分析 ➢ 使用過程分析
Weather Strip 安裝時受力分析 門打開和關閉受力計算

① Pre-stress情況

② Door Frame開始接觸



③ Door Frame變形和接觸過程 ④ Door Frame變形和接觸過程 ⑤ 自身接觸(Weather Strip Self Contact)

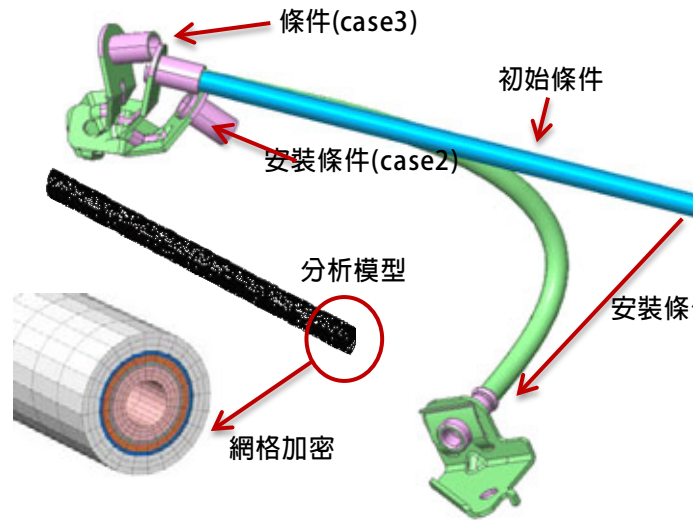


midas **NFX**

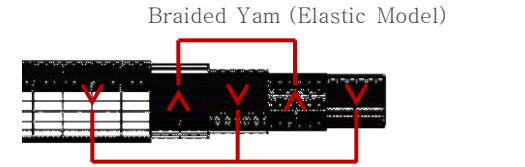
— 分析模型



分析條件



材料模型



Rubber (Hyper-Elastic Model)

